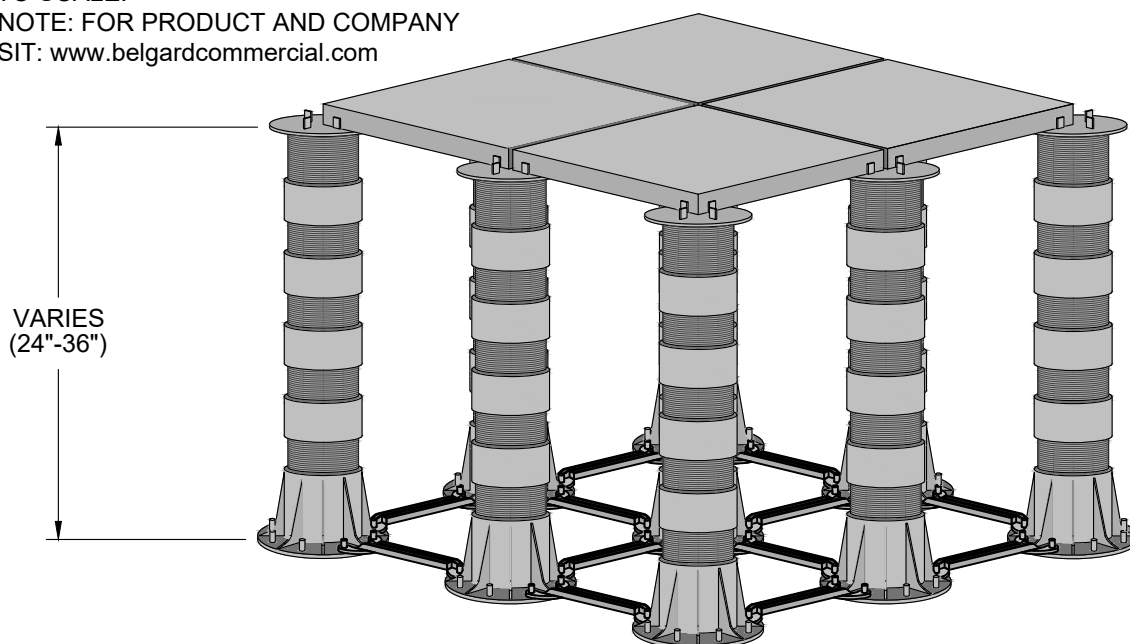


GENERAL NOTES: APPLY TO ALL OF THE BELOW PRODUCTS:

1. INSTALLATION MUST BE COMPLETED IN ACCORDANCE WITH MANUFACTURER SPECIFICATIONS.
2. DRAWINGS NOT TO SCALE.
3. CONTRACTOR'S NOTE: FOR PRODUCT AND COMPANY INFORMATION VISIT: www.belgardcommercial.com

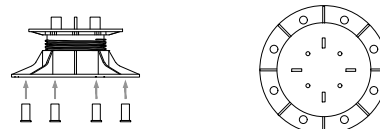
**NOTES:**

SCREWJACK PEDESTALS MUST BE BRACED FOR STABILITY TO ACCOMMODATE HEIGHTS IN EXCESS OF 24" UP TO A MAXIMUM OF 36". STRUCTURAL PERIMETER CONTAINMENT, WITH NO MORE THAN 1/8" WIDTH SPACING, ON ALL SIDES OF THE PEDESTAL DECK SYSTEM IS REQUIRED.

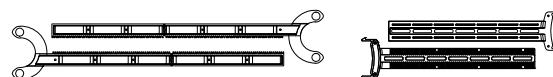
IMPORTANT: REFER TO SCREWJACK PRODUCT SPECIFICATIONS TO ENSURE PROPER USE AND INSTALLATION. FIND SCREWJACK SPECIFICATIONS AT www.BISONIP.com.

BRACING ASSEMBLY INSTRUCTIONS

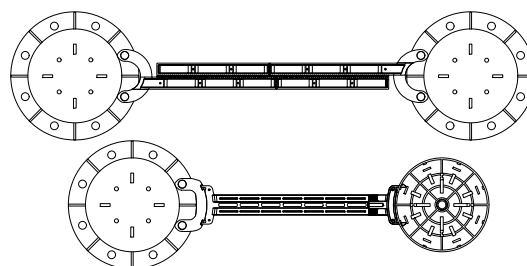
1. INSERT A PEG INTO EACH OF THE 8 HOLES IN THE BOTTOM OF EACH ADJUSTABLE PEDESTAL TO RECEIVE BRACING, AND CLICK THEM INTO PLACE.



2. DETERMINE HOW LONG THE BRACE SHOULD BE BASED ON THE SIZE OF THE PAVER. BRACES MAY NEED TO BE CUT DOWN FOR SHORTER DISTANCES.



3. SNAP THE BISON BRACE ONTO THE PEGS IN EACH ADJUSTABLE PEDESTAL. FOR FIXED HEIGHT PEDESTALS, SNAP THE BB-FIXED HEIGHT INTO THE SIDE OF AN HD50 OR HD75. USE A BB-CONNECT TO ATTACH THE BB-FIXED HEIGHT TO AN ADJUSTABLE PEDESTAL.



4. LOCK THE BRACING ARMS TOGETHER BY INSERTING BB-LATCHES INTO THE SIDE OF EACH BISON BRACE OR BB-SCREWS INTO THE TOP OF EACH BB-FIXED HEIGHT, AND TWIST 90 DEGREES.

